

Elliott Bar Code printing work with StrandWare Label Matrix V4.8 (LMW32)

- Example:
1. Module: COP shipping label
  2. Selected Field: Order No., Customer P.O., Ship-to Name, Ship-to Address 1  
Ship-to Address 2, Ship-to City, Ship-to State, Ship-to Zip code,  
Customer Item No., Customer Item Description 1
  3. Printer : HP5M

1. Enhancement Setup: System -> Bar Code Printing Setup:

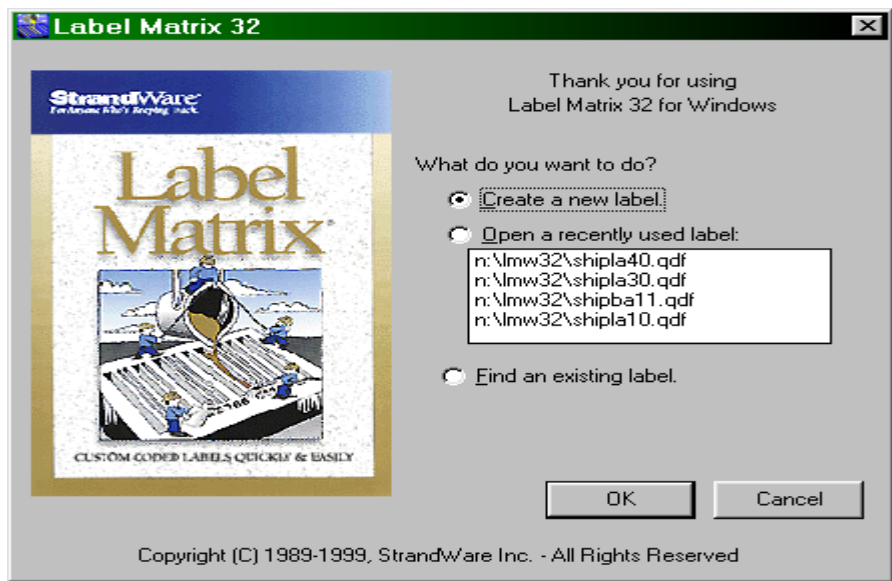
7. Enable COP Shipping Label Printing Function ?	<b>Y</b>
8. Shipping Label Quantity Determine Method	<b>A</b>
9. Different Shipping Label By Customer Type ?	<b>N</b>
10. Enter Shipping Label Default Path & File Name	
Path Name :	<b>M:\LMW32\LABELS\CPSHIP40.ASC</b>

2. Create Order and print Shipping Label from COP. System will create ASCII file CPSHIP40.ASC as following:

```
2145,98789BB12,Burkhart & Sons,909 White Water Ave,Suite 4004,Portland,OR,99651,7000-B1-55,TEST FOR  
LMW 545  
2145,98789BB12,Burkhart & Sons,909 White Water Ave,Suite 4004,Portland,OR,99651,7000-B1-55,TEST FOR  
LMW 545  
2145,98789BB12,Burkhart & Sons,909 White Water Ave,Suite 4004,Portland,OR,99651,700-B2-6546,TEST FOR  
LMW 78678
```

3. Design Label Matrix :

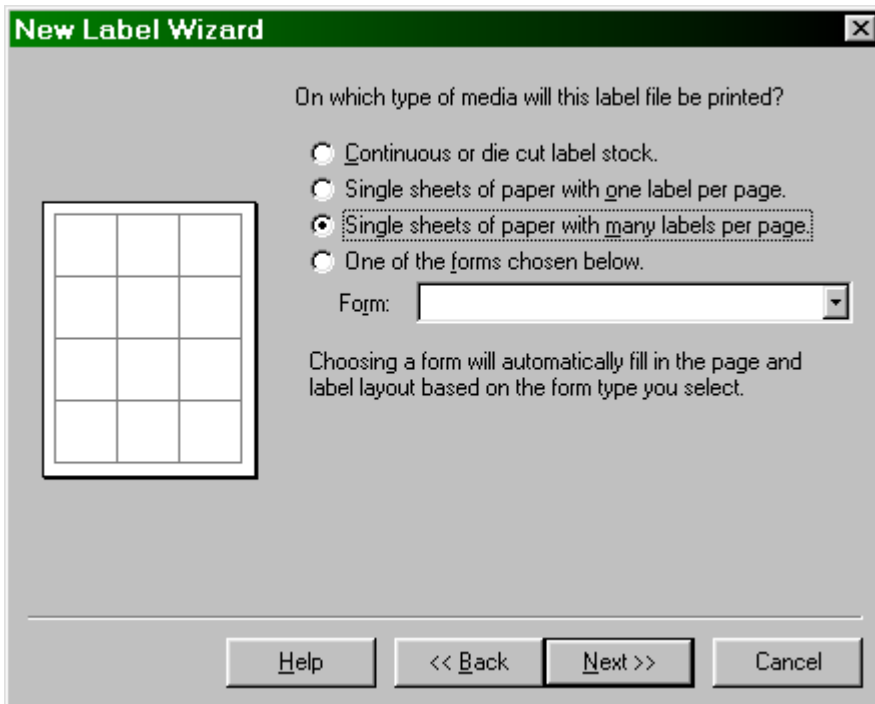
- A. Click “ Create new label”



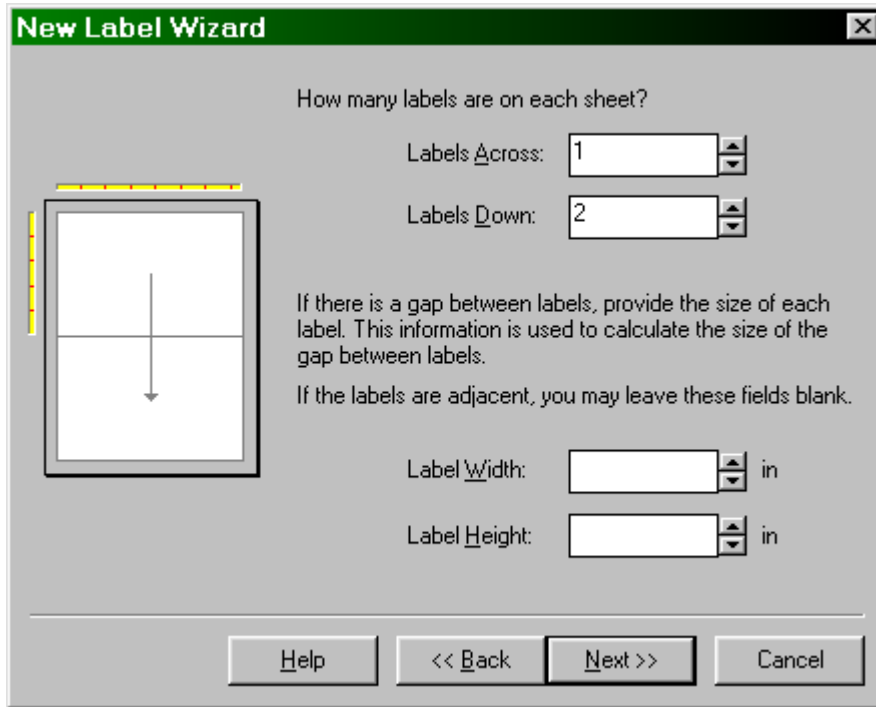
B.



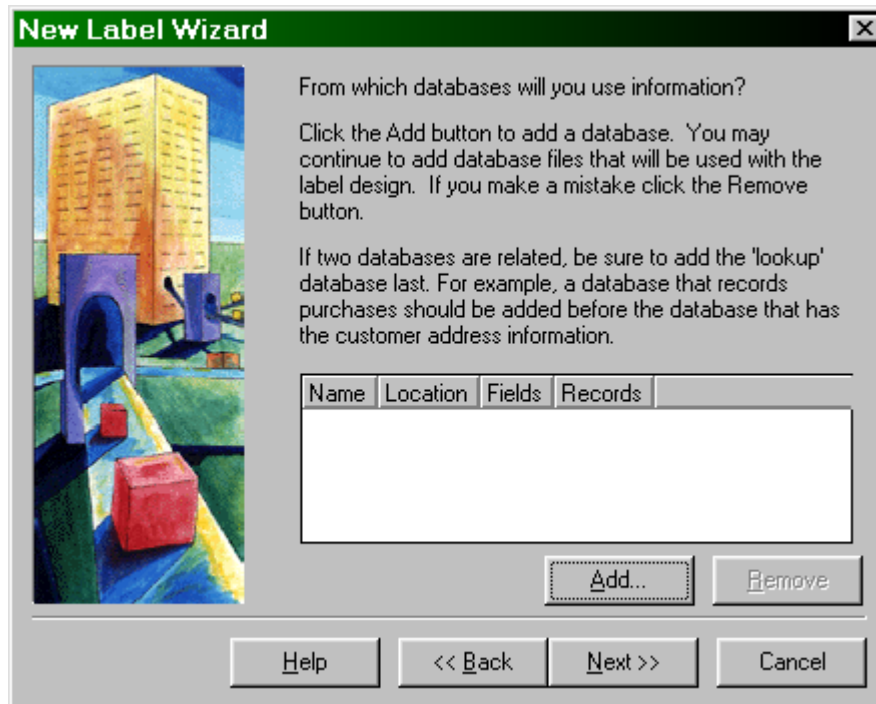
C.



D. Paper Size determine:



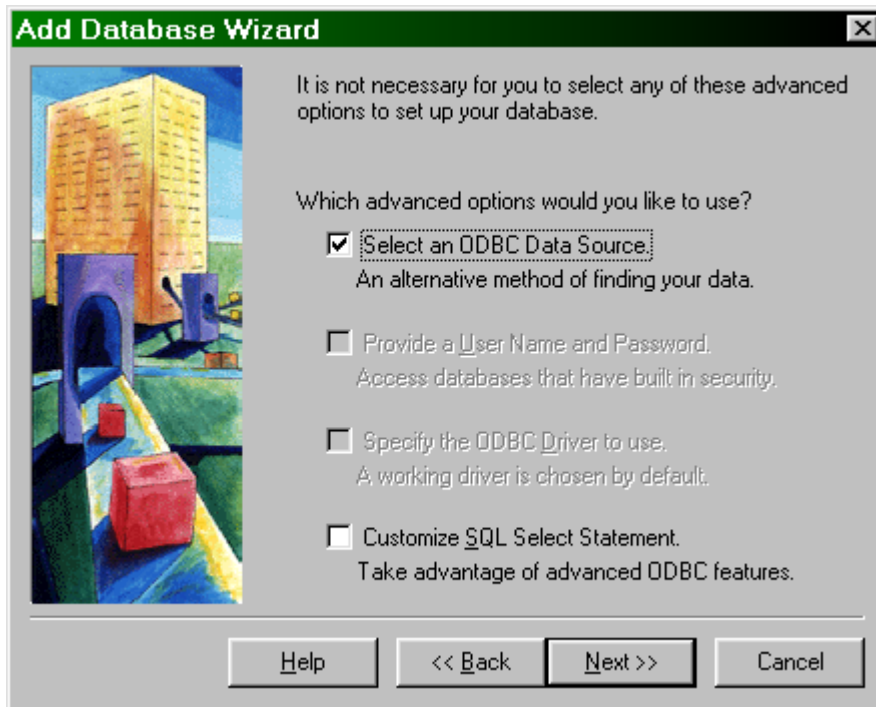
E. Add a DataBase:



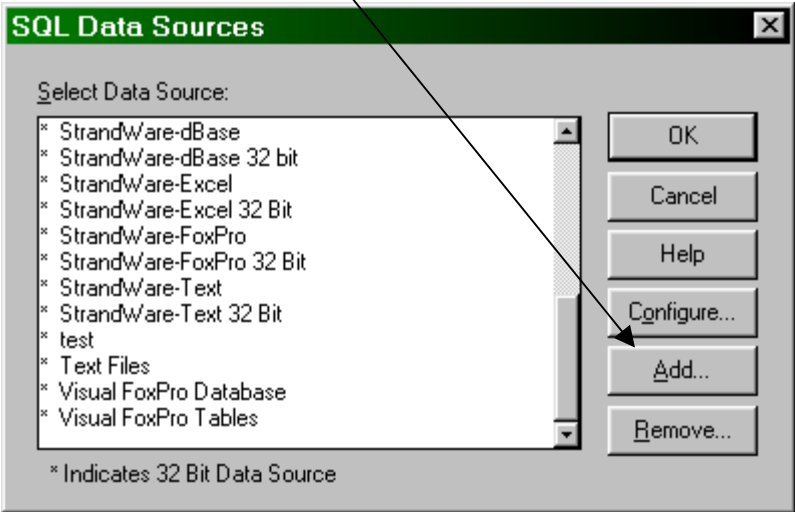
F. Select "Advance Setup"



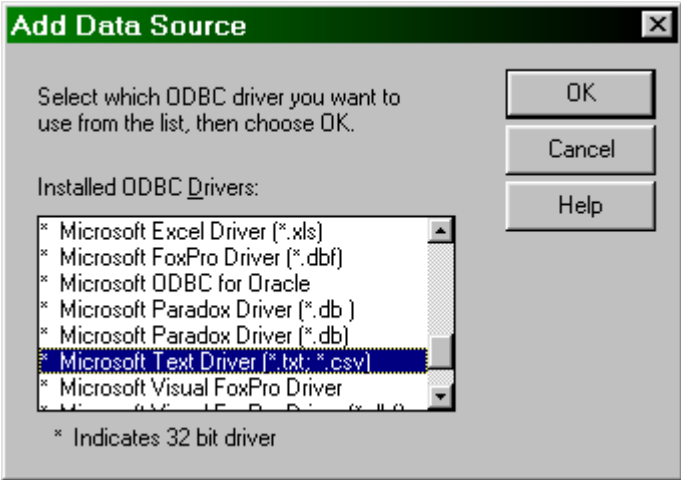
G. Select ODBC database:



H. Add new Database:



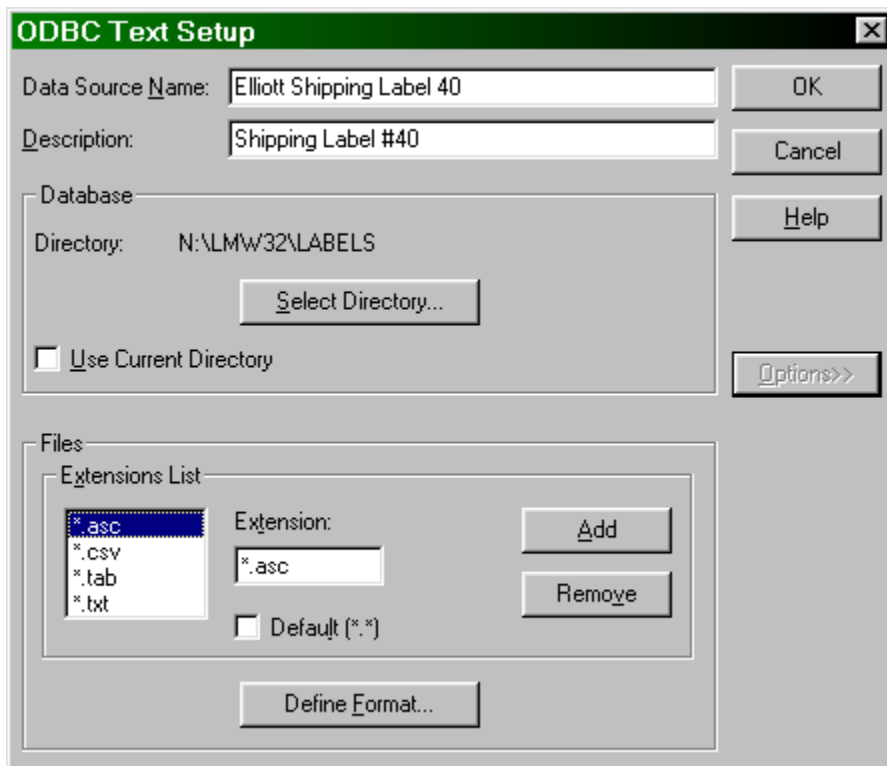
I. Select "Microsoft Text Driver":



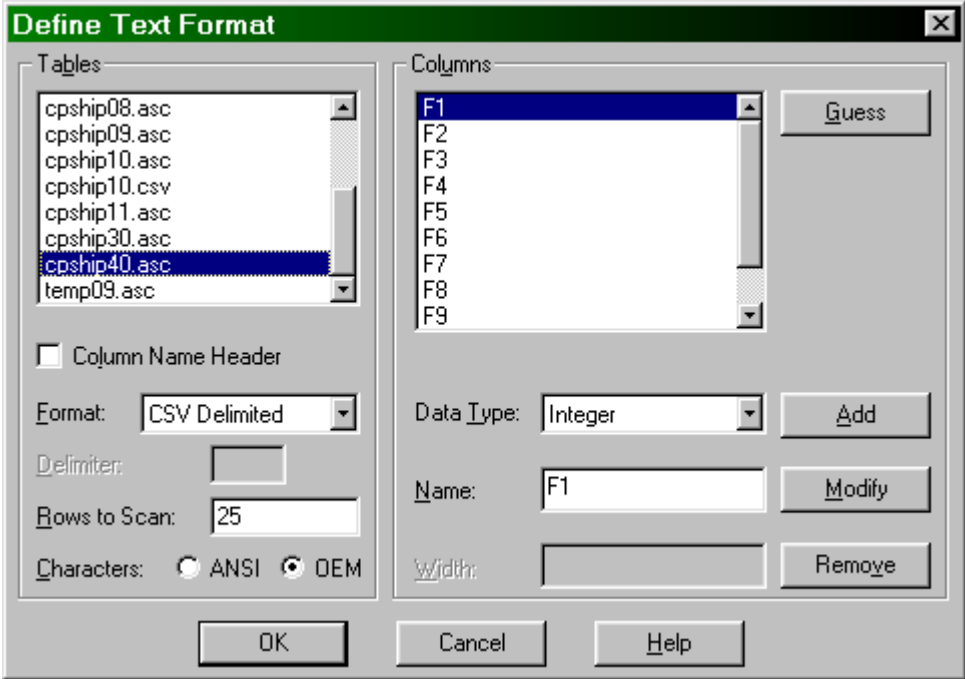
- I. Enter "Data Source Name".  
Enter "Description".  
Disable "Use Current Directory" and click (Select Directory) button to assign your Database directory. Our database directory is "N:\LMW32\LABELS" in this case.



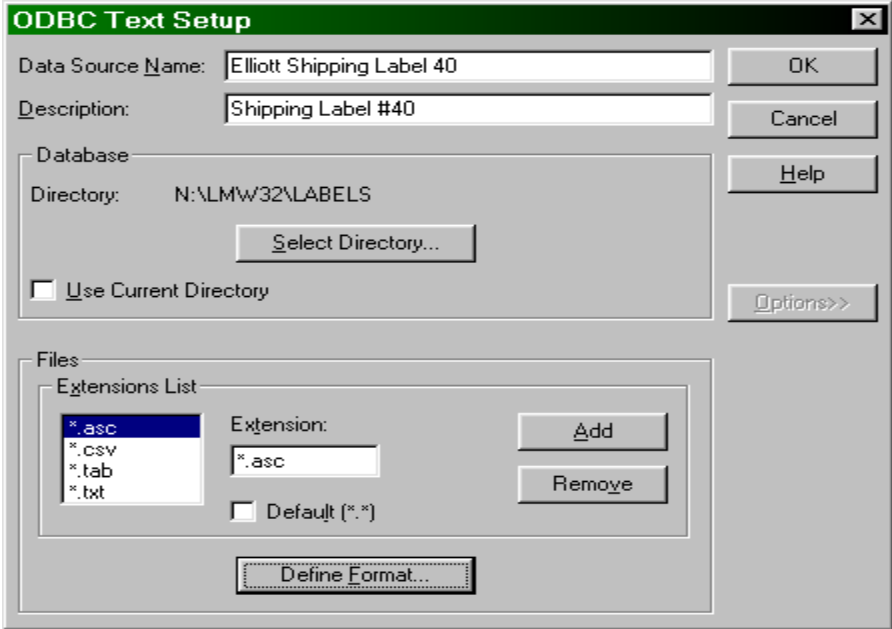
- J. Click (Options) and select your database file extension. Our extension is "\*.ASC".  
Click (Define Format..) to define database format. This is very important step.  
If you skip this step, it will cause GPF error message on printing.



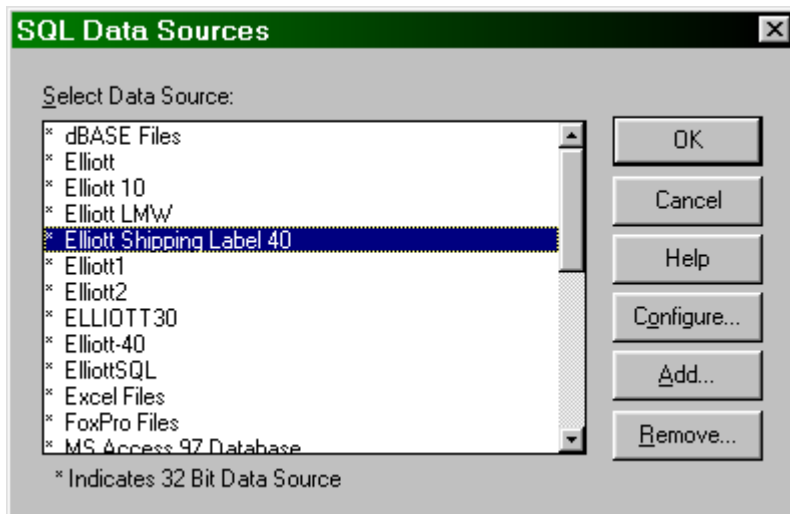
- K. Select your Tables --- cpship40.asc  
Click (Guess) to assign Columns ---- F1, F2, F3, F4, .....F10



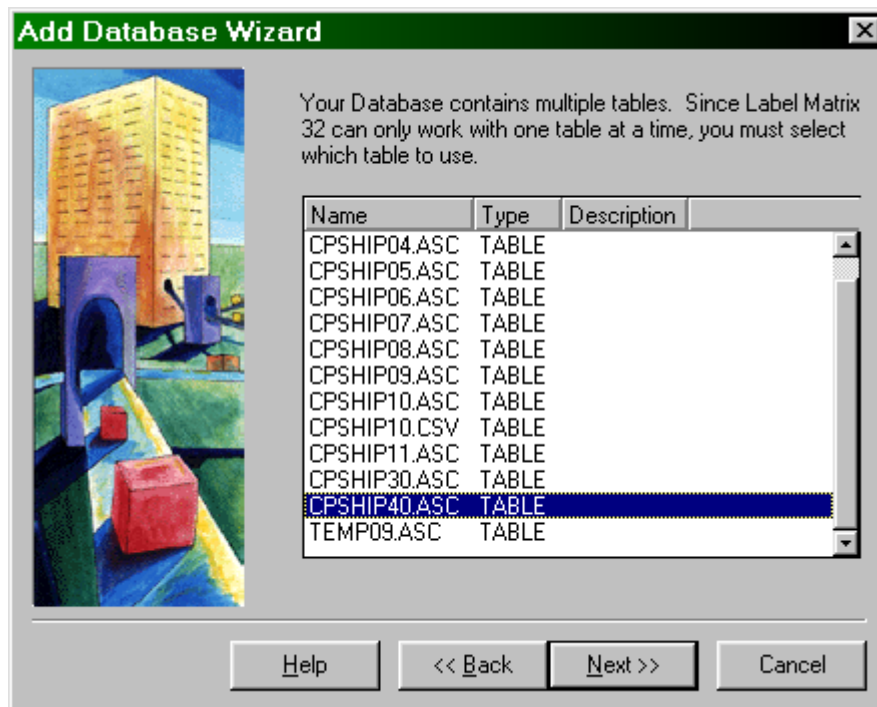
- L.



L. Now Data Source “Elliott Shipping Label 40” has been created, click (OK) to continue:

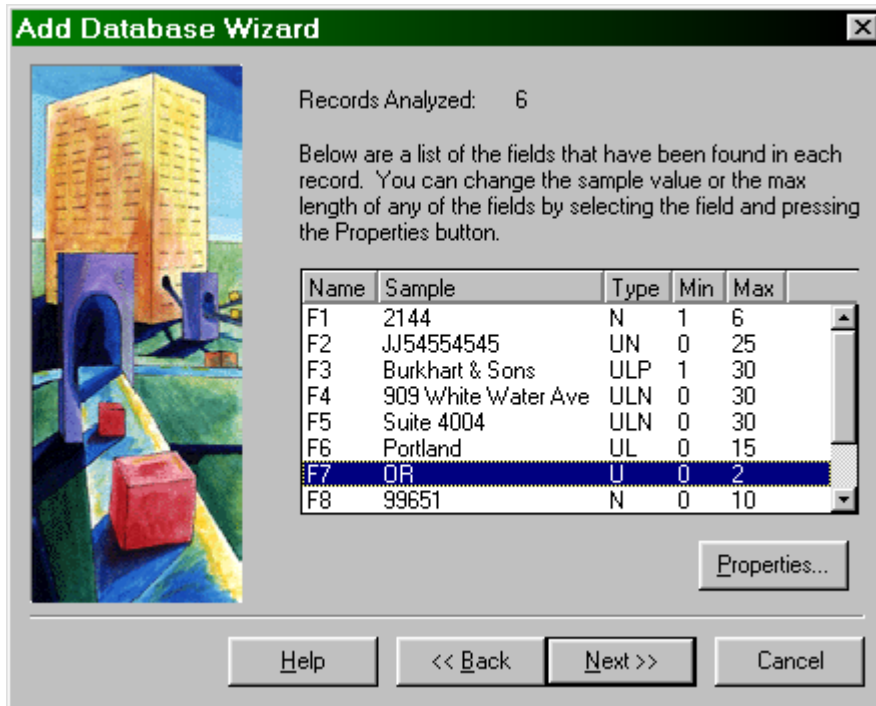


M. Select Database “CPSHIP40.ASC” for .....





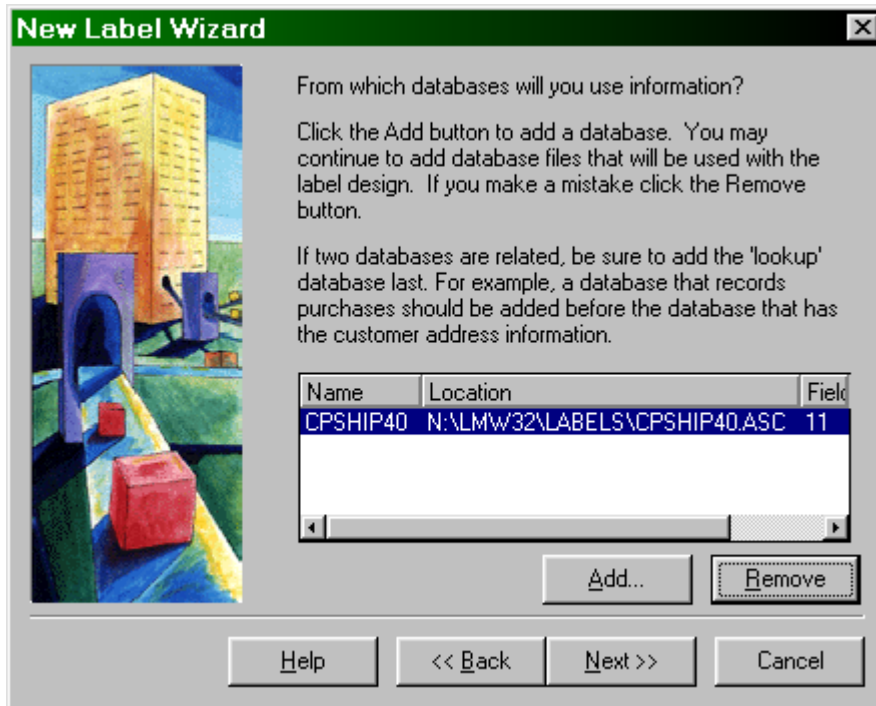
N.



O.



P.



Q.

Continue on file temp40.qdf

F:\useRS\rOGER\woRD\LMWDOC.DOC