

**NETcellent's  
Purchase Order  
Import**

**For**

**ELLIOTT  
VERSION 7.3x**

**From**

**NETcellent System,  
Inc.**



3096 Temple Ave  
Pomona, CA 91766  
Tel: 909.622.5009  
Fax: 909.622.5119  
E-mail: [sales@netcellent.com](mailto:sales@netcellent.com)  
Website: [www.netcellent.com](http://www.netcellent.com)

# Contents

---

<b>Section</b>	<b>Page</b>
Introduction .....	3
Setup Purchase Order Import Interface .....	3
Run Purchase Order Import.....	6
Error Handling.....	7
Developers Reference.....	8
What the Import Process Does and Does Not Do.....	8
Required Fields & Default Values.....	8
ASCII file layout .....	9
Order Import Header Information .....	9
Order import Line Item Information .....	10

*Purchase  
Order  
Import*

## **Introduction**

The import module is designed to import a pre-defined ASCII file to create PO orders. It is intended to provide an easy way for developers to create an add-on solutions for creating purchase orders. This includes, but is not limited to, EDI (Electronic Data Interchange), E-Commerce and using a notebook computer or portable device to capture off-line purchase orders. Since a third party developer does not need to know how to update various different files that are required to create PO orders, the task is easy to accomplish.

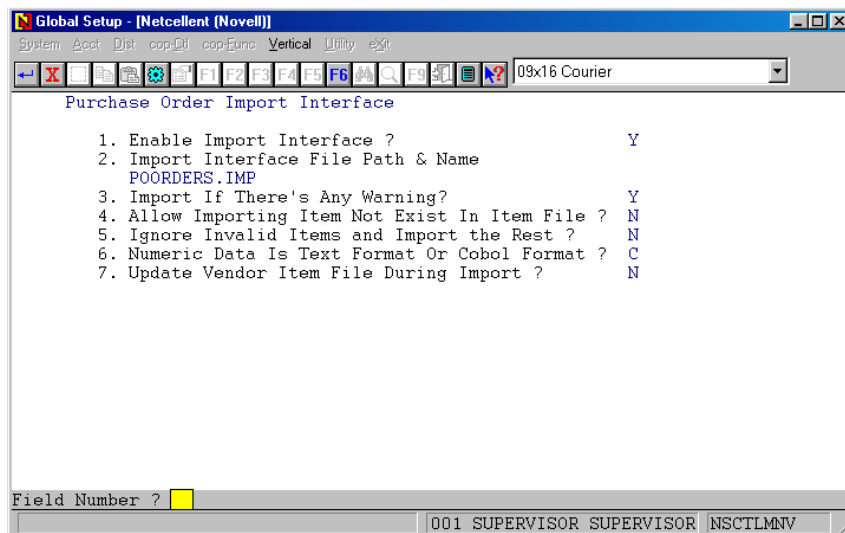
Not only does this relieve the developers to interface with Elliott's Btrieve® or Micro Focus® ISAM files, it also simplifies the task to create an import ASCII file by requiring only the vendor number and item number in the ASCII file. For other fields, the system will honor the information in the ASCII file or if a field is left blank a default value is assumed. Therefore, a developer only needs to populate a few important fields that are relevant to its application without needing to know the meaning of every field. The formatted ASCII file layout is included in the later portion of this document.

## **Setup Purchase Order Import Interface**

To setup the import interface, you will need to go to

1. The Elliott Main Menu
2. Util Setup
3. Global Setup
4. Vertical
5. Purchase Order Import Interface

You should see a screen similar to figure 1. Please be aware that the Purchase Order Import function requires a separate license and you will not be able to access this function if you are not licensed for it.



**Figure 1 shows the setup screen for the Import Enhancement.**

*Purchase  
Order  
Import*

**1. Enable Import Interface?**

This must be set to "Y" to use the import function.

**2. Import Interface File Path & Name**

The default value is POORDERS.IMP. However, please specify a valid path in front of the file name. If no path is given the file should reside in:

- 1) The \Macola or \Elliott root directory - if you are using Dos Elliott
- 2) The \Macola or \Elliott root directory - if you are using 16-Bit NWSM\Elliott
- 3) The \NSI or \Elliott directory (where ever NWSM is installed) - if you are using 32-Bit NWSM\Elliott

**3. Import If There's Any Warning?**

The default is "Y". If set to "Y" the data will still be imported if there are any warnings found. For example lets say there is an invalid item number for your trading partner, specified in the import ASCII file. Since this is a warning, not an error condition, Elliott will use the default value. If you do not want the default condition to take place, then answer "N" to this flag to prevent the system from importing purchase orders when there is a warning condition.

**4. Allow Importing Item Not Exist In Item File?**

Default value is "N". It allows you, if set this flag to "Y", to import your data even if the item is not existed in the item file or item number is blank (office supplies...etc). If this flag is set to "N", the import of non-existing item will be denied, and error condition will report. If this flag is set to "W" (warning), system will import non-existing item number, but it will give you a warning message.

**5. Ignore Invalid Items and Import the Rest?**

The default value is "N". This allows you, if set to "Y", to import your data even if an item is invalid. By default, an invalid item in the imported ASCII file is considered an error condition and the import function will not import any of the data in the ASCII file. This is necessary to correct error conditions so users can make the necessary changes to fix the problem.

However, sometimes the error was at the source where we can't do anything about it and we still want to import the rest of the orders by ignoring the invalid item. Then you would set this flag to "Y" temporarily and import the ASCII file. After that, change this flag back to "N" to ensure data integrity.

**6. Numeric Data Is Text Format or Cobol Format?**

This flag specifies how your text file's numeric field will be formatted. If you select "T" for text, the number "12.5" will be stored as "12.5", "+12.50" or "00012.50+".

The text format is very liberal; almost any human readable format can be used in the designated area for the numeric field. If you select "C" for Cobol, the number "12.5" may be stored as "0001250+" where the leading zeroes are required and the decimal

*Purchase  
Order  
Import*

point is implied. Depending on whether the field is signed or not the sign will be required as the trailing digit. If you select the wrong format, your data will be imported incorrectly. Please verify with your developer which numeric data type should be used. If you are using Bergen's Simple EDI, please set this field to "T" for text format.

**7. Update Vendor Item File During Import?**

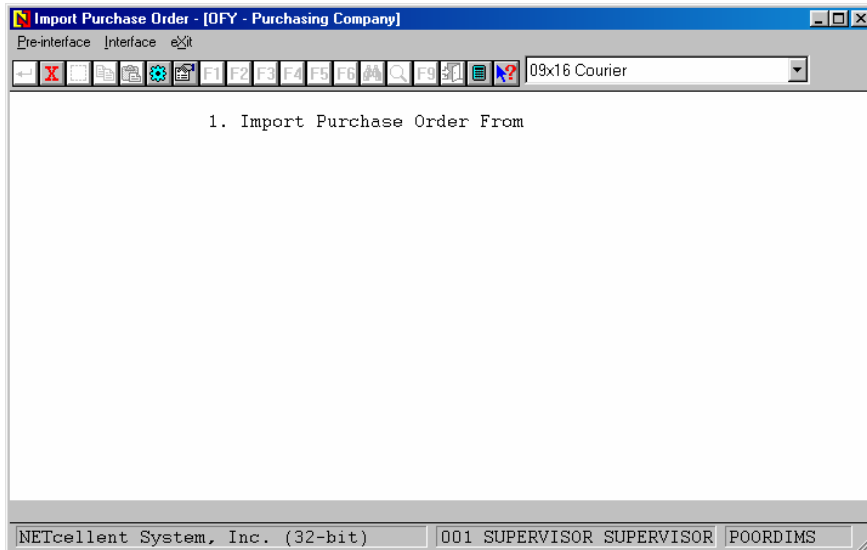
Default value is "N". It will update vendor item file if this flag is set to "Y". If vendor item file is not match with our import data, the vendor item file will be update. If vendor item file is not existed, system will create a new record for vendor item file.

*Purchase  
Order  
Import*

## ***Run Purchase Order Import***

Once the import ASCII file is created by the developer's application, you can import purchase into Elliott by going to:

1. The Purchase Order main menu
2. Util-Setup
3. Purchase Order Report



***Figure 2 shows the Purchase Order Import Screen***

The Import utility provides two functions: (1) Pre-Post Edit List and (2) Posting. The Pre-Post function will check the data integrity and report any warning or errors and print a report to show the orders and items that are being imported. We suggest printing a Pre-Post to make sure the data is correct before proceeding to posting. This is especially important during the initial phase of implementing the interface project. When users select post, the system will also perform an integrity check, if there are any errors, the system will not proceed with posting. However, if any warnings are found, the system will post the data if the setup allows. A typical warning can be for example, a terms code is invalid so the system will substitute the customer terms code as defined in the customer file. Typical errors are customer or item not found, or order number specified already exists.

*Purchase  
Order  
Import*

## **Error Handling**

The following is one of the common error messages that you may encounter and the solution may not be immediately obvious. You may get the following message on your Import Interface Edit List.

*Import File Path: F:\ELLIOTT\POORDERS.IMP*

*Interface File Had Exited, Process Aborted!*

When you receive this message it indicates that your previous pre-post or post was aborted. This message indicates that a file POORDERS.IM\$ exists. The import Pre-Post process will copy POORDERS.IMP → POORDERS.IM\$ and will print a report based on the POORDERS.IM\$. At the end it will delete the POORDERS.IM\$ file. Posting will rename POORDERS.IMP → POORDERS.IM\$ and will post based on POORDERS.IM\$. At the end of posting it will delete POORDERS.IM\$.

If the abort was during Pre-Post, you can simply delete this file (POORDERS.IM\$).

If the abort was during a post, you need to decide whether this file is still needed or needs to be edited depending on if the posting is (1) not started yet; (2) partial posted; (3) fully posted. If it is (1), rename POORDERS.IM\$ to POORDERS.IMP (the current poorders.imp has to be renamed to something else first). If it is (2), you will need to find out where the posting stopped and edit the POORDERS.IM\$ to delete the records that have already been posted. If it is (3), delete the POORDERS.IM\$ file.

*Purchase  
Order  
Import*

## ***Developers Reference***

### ***What the Import Process Does and Does Not Do***

A Developer is responsible for writing to an ASCII text file with the order header and line item information in the format specified by NETcellent. Elliott's import utility will then import the data and create the sales orders. Elliott's import utility will perform the following functions:

- Validate data integrity.
- Give warnings or errors if a problem with data is detected.
- Assign a default value if field is left as blank.
- Calculate fields like item weight ...etc.
- Assign an order number.
- Update the following files:  
Vendor Item File...etc.

The Elliott import utility currently does not support importing feature option items. It does not support serial/lot items for "I" or "C" type orders because there's no mechanism currently to supply serial/lot numbers in the import ASCII file. By the same token, it will not support the multi-bin feature if the import order type is "I" or "C". Serial/lot numbers and multi-bin functions are fully supported for "O" type orders.

### ***Required Fields & Default Values***

Almost all the fields in header and line item record can be left blank. The only required fields are Vendor-Number in the header record and the Item-No in the line item record. When the field is left blank, the system will automatically determine a default value. The following are some examples of the default values if corresponding fields in the import ASCII file are left blank:

PO Number: Sequentially assigned from PO Control file  
PO Date: System Date  
PO Type: "N" type normal  
Ship-To No: from PO control file



*Purchase  
Order  
Import*

## **ASCII file layout**

### **PO Import Header Information**

	<u>Field Description</u>	<u>Size</u>	<u>Decimal Digits</u>	<u>Signed</u>	<u>Position</u>	<u>Notes</u>
1	Header	1			1-1	"H" = Header
2	PO Order No	6	0		2-7	Leave it blank
3	PO Release No	2	0		8-9	Leave it blank
4	Vendor No	6	0		10-15	Required Field
5	PO Order No – Alt	6	0		16-21	Leave it blank
6	PO Release No – Alt	2	0		22-23	Leave it blank
7	Order Type	1			24-24	Blank for default
8	Order Date	8			25-32	Leave it blank
9	Order Status	1			33-33	Blank for default
10	Chg Cancel CD	1			34-34	Leave it blank
11	Vend Late Cancel Flag	1			35-35	Leave it blank
12	Print Date	8			36-43	Leave it blank
13	Print Post Flag	1			44-44	Leave it blank
14	Buyer Cd	2			45-46	Blank for default
15	Ship To Cd	6			47-52	Blank for default
16	Ship Via Cd	2			53-54	Blank for default
17	Terms Desc.	15			55-69	Blank for default
18	Fob Cd	2			70-71	Blank for default
19	Col Ppd Cd	1			72-72	Leave it blank
20	Ack Flag	1			73-73	Leave it blank
21	Cnfirm Flag	1			74-74	Leave it blank
22	Prt Price Flag	1			75-75	Leave it blank
23	Order Weight	8	3		76-83	Leave it blank
24	Comment Cd – 1	2			84-85	Leave it blank
25	Comment Cd – 2	2			86-87	Leave it blank
26	Comment Cd – 3	2			88-89	Leave it blank
27	Comment – 1	30			90-119	Leave it blank
28	Comment – 2	30			120-149	Leave it blank
29	Comment – 3	30			150-179	Leave it blank
30	Due Days Literal	6			180-185	Leave it blank
31	Due Days Fil	1			186-186	Leave it blank
32	Due Days	3	0		187-189	Leave it blank
33	Disc Days Fil	1			190-190	Leave it blank
34	Disc Days Literal	6			191-196	Leave it blank
35	Disc Days	3	0		197-199	Leave it blank
36	Disc Percent Fil	1			200-200	Leave it blank
37	Disc Percent Literal	4			201-204	Leave it blank
38	Disc Percent	5			205-209	Leave it blank
39	Filler	70			210-279	Leave it blank

*Purchase*  
*Order*  
*Import*

**PO import Line Item Information**

	<u>Field Description</u>	<u>Size</u>	<u>Decimal</u> <u>Digits</u>	<u>Signed</u>	<u>Position</u>	<u>Notes</u>
1	Detail Line	1			1-1	"L" = Line Detail
2	Item – Order Number	6	0		2-7	Leave it blank
3	Item – Release Number	2	0		8-9	Leave it blank
4	Item – Line Number	3	0		10-12	Leave it blank
5	Item – Item Number	15			13-27	Required Field
6	Item – Vendor No	6			28-33	From Header Vendor No
7	Item – Description 1	30			34-63	Leave it blank
8	Item – Description 2	30			64-93	Leave it blank
9	Item – Vendor Item No	15			94-108	Leave it blank
10	Item – Status	1			109-109	Leave it blank
11	Item – Chg Cancel Cd	1			110-110	Leave it blank
12	Item – Vend late Cancel Flag	1			111-111	Leave it blank
13	Item – Account Number	24			112-135	Blank for default
14	Item – Var Account Number	24			136-159	Blank for default
15	Item – Unit Measure	2			160-161	Blank for default
16	Item – Stock Unit Measure	2			162-163	Blank for default
17	Item – U-M Conversion Rate	7	3		164-170	Leave it blank
18	Item – Exp Unit Cost	11	4	Y	171-181	Leave it blank
19	Item – Act Unit Cost	11	4	Y	182-192	Leave it blank
20	Item – Commodity Cd	4			193-196	Blank for default
21	Item – Notify Initials	3			197-199	Blank for default
22	Item – Move To Location	3			200-202	Blank for default
23	Item – Job Number	6			203-208	Leave it blank
24	Item – Blanket Type	1			209-209	Leave it blank
25	Item – Qty Ordered	13	3	Y	210-222	Leave it blank
26	Item – Qty Ord Chg Amount	13	3	Y	223-235	Leave it blank
27	Item – Qty Released	13	3	Y	236-248	Leave it blank
28	Item – Qty Received	13	3	Y	249-261	Leave it blank
29	Item – Qty Rejected	13	3	Y	262-274	Leave it blank
30	Item – Qty Invoiced	13	3	Y	275-287	Leave it blank
31	Item – Dollars Invoiced	10	2	Y	288-297	Leave it blank
32	Item – Request Date Chg Flag	1			298-298	Leave it blank
33	Item – Request Date	8	0		299-306	Leave it blank
34	Item – Promise Date	8	0		307-314	Leave it blank
35	Item – Receive Date	8	0		315-322	Leave it blank
36	Item – Inspector	3			323-325	Leave it blank
37	Item – Reject Reason Cd	2			326-327	Leave it blank
38	Item – Comment Cd – 1	2			328-329	Leave it blank
39	Item – Comment Cd – 2	2			330-331	Leave it blank
40	Item – Comment – 1	30			332-361	Leave it blank
41	Item – Comment – 2	30			362-391	Leave it blank
42	Item – Std Cost	11	4	Y	392-402	Leave it blank
43	Item – Act Land Cost	11	4	Y	403-413	Leave it blank
44	Filler	89			414-502	Leave it blank

*Purchase  
Order  
Import*

Notes:

1. "Blank for default" means if you don't know the meaning of the field, just leave it blank, the system will assign a default value for you.
2. "Leave it blank" means you don't need to put any value in that field. Don't put anything in that field unless you know what you wish to accomplish. Leaving it blank will let the system assign a default value.
3. "Vendor Number" and "Item Number" are required fields, everything else, you can leave blank and a default value will be assumed.
4. The Vendor Number can be the vendor number as defined in Elliott Vendor database.
5. Item Number can be Elliott's item number.
6. All dates fields are stored in PIC 9(8) format. You should store your data in YYYYMMDD format. For example, 7/1/1999 should be stored as "19990701".