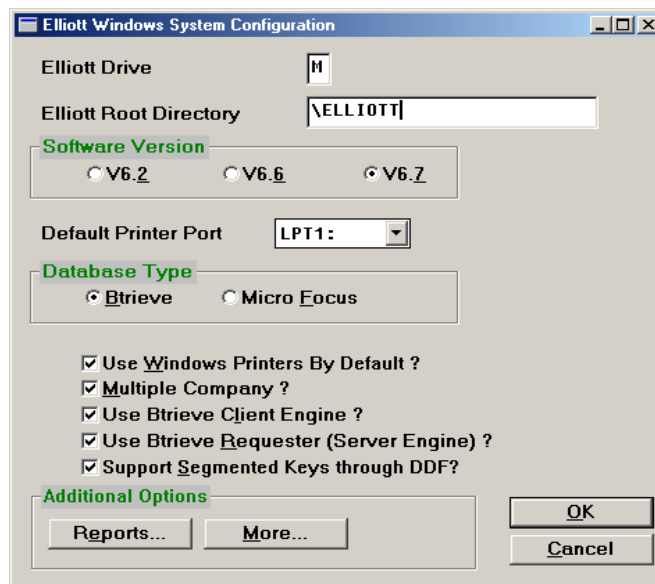


## Elliott Upgrade Procedure for v6.7X, v6.6X v6.2

We recommend that you perform a complete backup of your system before proceeding. Once the backup is done, install Elliott from the CD provided. The installation procedure is the same for all three versions; only v6.2 requires data conversion.

### Install the Elliott Program

1. Insert the Elliott CD into your computer's CD ROM Drive.
2. The installation program should automatically run.
3. If it doesn't, then use Window's Explorer to access your CD ROM Drive. You can manually execute the installation program by selecting setup.exe.
4. Select the drive letter you wish to install Elliott on, and accept the default directory (i.e. M:\Elliott).
5. After the installation is completed, you will need to run the Elliott configuration program. Point to the Elliott configuration icon and double click. Refer to the figure below as an example:



You have successfully completed the installation and setup of Elliott.

## **Installing Manufacturing Modules**

If you are running manufacturing modules, then NETcellent should have supplied you with the additional Elliott manufacturing modules on floppy diskette. If you do not have these diskettes, please contact your Elliott reseller. You can install the Elliott manufacturing modules by inserting the diskette labeled "Installation Utility Disk" into your floppy diskette.

1. From A:\type "install" and press enter.
2. Select the necessary manufacturing modules to install.
3. When the system prompts you for directory, make sure that you specify the correct directory and drive letter that Elliott resides on (i.e. M:\ELLIOTT\DATA).

## **Copying over existing files from 6.7X, 6.6X, 6.2 to Elliott**

1. From your application directory (i.e. M\Macola), copy all the .BAT files to the new Elliott directory.
2. From your application directory, copy the SYSPASS.BTR file to your Elliott directory.

## **Copying Data from your existing application directory to Elliott**

1. After finishing the Elliott installation you must now copy your company's data from your application directory over to the new Elliott directory (i.e. M:\ELLIOTT\DATA).
2. From your application directory (i.e. M:\Macola\data), type copy \*.\* M:\ELLIOTT\DATA (assuming that M is your Elliott drive letter).
3. After you have copied your company's database from your application directory to Elliott, execute Elliott and change your data path under company setup. It should be set to whatever drive Elliott resides on.

### **Converting your existing Data for v6.2 users**

1. Make sure that conv67.lbr (11/10/00) and 60to67.int (10/16/00) are located in your ELLIOTT directory.
2. From the Dos Prompt, type 'set mspl=fix'
3. From the Dos Prompt, start up the dos version of Macola (ie. Type 'Macolabt.bat', 'Macola.bat', etc...')
4. When the program asks you for the conversion program to run, type '60to67'
5. The conversion utility will run a self-check on the files to be converted. If everything is OK, it will prompt you to select the modules you wish to convert. Make sure that you answer 'Y' to all modules you want to convert.
6. At the bottom of the screen, select '2' for convert 6.2000 data.
7. Press Enter to begin.
8. From the Dos Prompt, type 'set mspl='

### **Converting your existing Data for v6.6X users**

1. Make sure that conv67.lbr (11/10/00) and 66to67.int (5/15/98) are located in your ELLIOTT directory.
2. From the Dos Prompt, type 'set mspl=fix'
3. From the Dos Prompt, start up the dos version of Macola (ie. Type 'Macolabt.bat', 'Macola.bat', etc...')
4. When the program asks you for the conversion program to run, type '66to67'
5. The conversion utility will run a self-check on the files to be converted. If everything is OK, it will prompt you to select the modules you wish to convert. Make sure that you answer 'Y' to all modules you want to convert.
6. Press Enter to begin.
7. From the Dos Prompt, type 'set mspl='