



Elliott® V7.3 Upgrade Procedure for V6.7x/6.6x or Macola® V6.2/6.3

Thank you for deciding to upgrade to Elliott V7.3. You have made an excellent choice. Elliott V7.3 will be one of your most valuable upgrades. The upgrade process is relatively easy and risk free. However, we recommend that you perform a complete backup of your current Elliott/Macola® application before proceeding with the upgrade. If you are evaluating for upgrading to Elliott V7.3, you may proceed directly to install Elliott V7.3 to its own directory (i.e. \elliott7).

Elliott V7.3 can not operate in the same directory of Elliott V6.6 and V6.7 DOS version. However, it is possible for Elliott V7.3 run on a different drive from Elliott V6.6 and V6.7 with the same path and run side by side. If you are installing Elliott V7.3 as an in-place upgrade to Elliott V6.6/V6.7, and when you should install the application to the existing directory where the previous version of the Elliott software resides, Elliott V6.6/V6.7 (Windows Version) will no longer be functional.

If you do not have to run Elliott V7.3 and Elliott V6.7x side by side and your disk space allows, we suggest that you to install Elliott V7.3 into its own directory (i.e. \ELLIOTT7). Then you can copy the individual data directory (as well as SYSPASS.BTR in the root directory) from the previous version directory (i.e. \ELLIOTT or \MACOLA) to \ELLIOTT7 and change all users' desktop icon to startup Elliott V7.3 from the new directory. You should convert your database to Btrieve first in Elliott or Macola 6.x before converting to Elliott V7.3.

Installing the Elliott Program

Install Elliott V7.3 to a Separate Directory

If you are installing Elliott V7.3 for evaluation, you should install Elliott V7.3 into its separate directory (i.e. c:\elliott7). If you try to upgrade from previous Elliott version, we also recommend you install Elliott V7.3 into a separate directory for this present the least amount of risk. If you wish to install onto your network so other users can share the same copy of Elliott, please change your drive letter to the network drive.

1. Insert the Elliott V7.3 CD into your computer's CD ROM Drive.
2. The installation program should automatically run.
3. If it does not, please use Window's Explorer to access your CD ROM Drive. You can manually execute the installation program by clicking on **setup.exe**.
4. Select the drive letter you wish to install Elliott on, and accept the default directory (i.e. c:\Elliott7 or choose a different drive).
5. If you wish to test how the upgrade will work, copy the data directory from your existing V6.x application to \elliott7 directory. For example, if your existing V6.x application is in M:\ELLIOTT and you have just install Elliott V7.3 into

- M:\ELLIOTT7, from the Windows explorer, copy the DATA directory under M:\ELLIOTT to M:\ELLIOTT7.
6. You also need to copy the SYSPASS.BTR file from your existing Elliott directory (i.e. M:\Elliott) to your new Elliott7 directory.
 7. You can repeat step 5 for other data directory.

Running Elliott V7.3 side by side with V6.7x/6.6x

If you wish to run both Elliott V7.3 and V6.x applications side by side and share the same data files, you can install Elliott V7.3 to a different drive letter with the same path name as Elliott V6.7x/6.6x. In Elliott V7.3, change the company file setup to point all modules' drive letter to where V6.7x/6.6x resides. For example, your Elliott V6.7x application reside in:

M:\Elliott

And you have one company setup in the DATA directory. Then install your Elliott V7.3 application into:

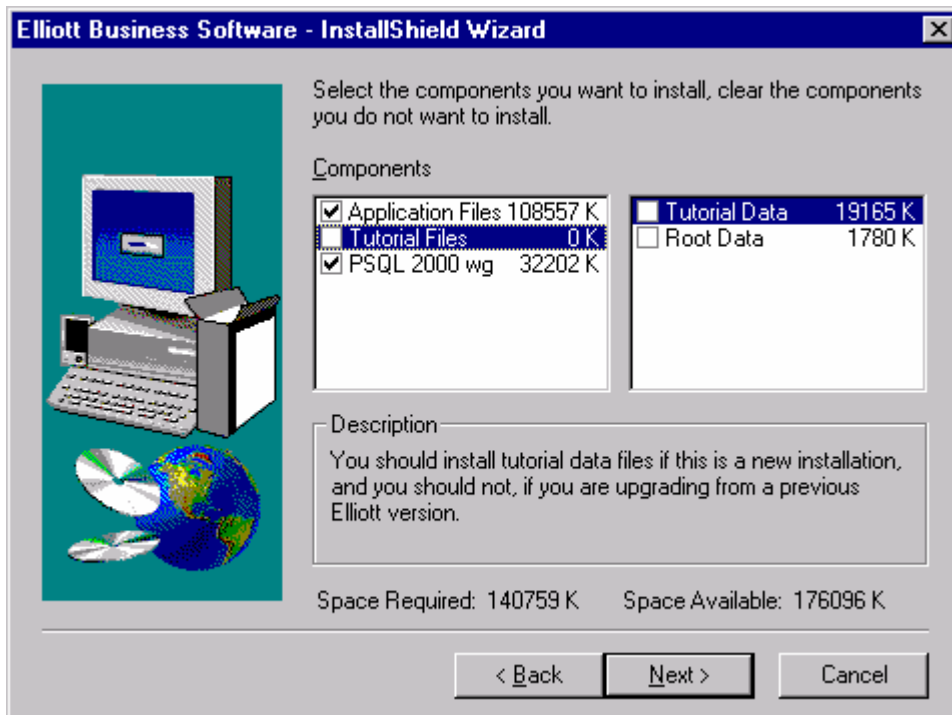
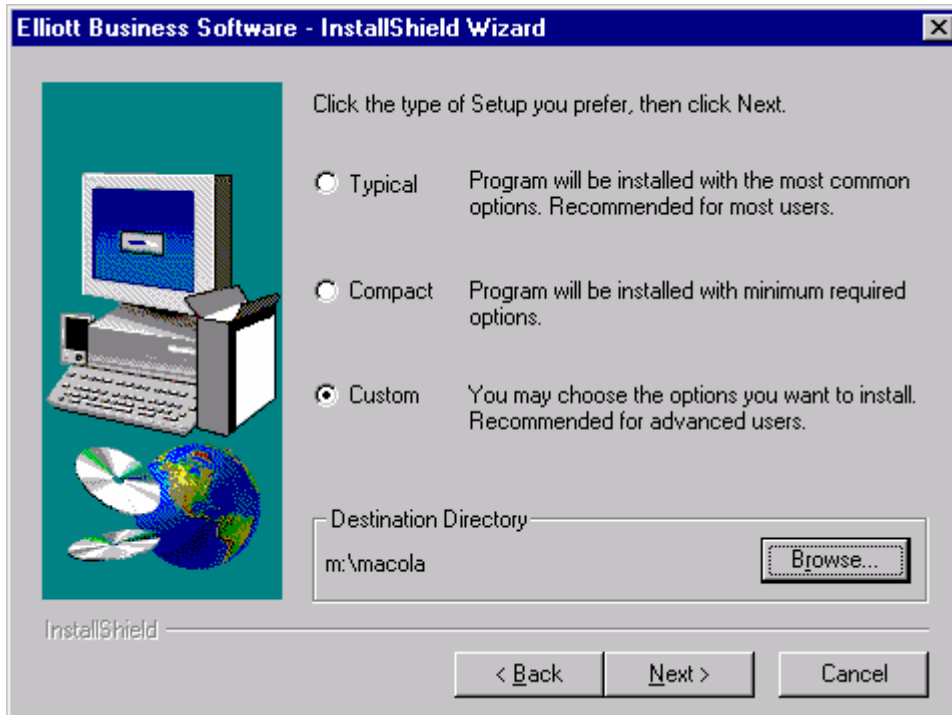
N:\Elliott

Copy SYSPASS.BTR from M:\Elliott to N:\Elliott. Startup EL700.EXE from N:\Elliott and login as SUPERVISOR. Create a new company for "01" during the company selection window. In company setup, change drive letter for all modules to "M". This will allow both V7.3 and V6.7x running side by side.

Install Elliott V7.3 on Top of Your V6.7x/6.6x Directory

If you install Elliott V7.3 on top of your existing Elliott V6.x directory (i.e.\Elliott or \Macola). Then you will not be able to run Elliott V6.7x/6.6x anymore. Therefore, this process presents a higher risk than the first and second approach. There is no going back unless you restore the original data from a backup file. For this reason, you must make a complete backup of your Elliott or Macola® directory before you perform this step.

Make sure to use the "**custom**" installing option and we suggest you not to install "**Tutorial Data**". If you do wish to install Tutorial Data, **make sure to NOT install "Root Data"** so your existing password file will be preserved.



Insert the Elliott V7.3 CD into your computer's CD ROM Drive.

1. The installation program should automatically run.
2. If it does not, then use Window's Explorer to access your CD ROM Drive. You can manually execute the installation program by clicking on **setup.exe**.

3. Select the drive letter and directory where you existing 6.x application is installed (i.e. M:\Elliott or M:\Macola).

Installing Pervasive PSQL Database Engine

Elliott V7.3 requires PSQL 2000 or 8 to run. If you have PSQL already installed on your server and your client, you do not need to do anything with this step. If you do not have PSQL and wish to purchase a copy, please contact your Elliott reseller to obtain an OEM version of PSQL 8 for Elliott.

If you are evaluating Elliott V7.3 and do not have the PSQL Engine, you can run the Setup.EXE program in the \WGE directory on your Elliott V7.3 CD. This is an evaluation copy of PSQL 2000 Workgroup Engine for your evaluation of Elliott only.

If you are using an application that requires a special license for PSQL, you may want to install PSQL 2000 Workgroup Engine on a separate machine that is not running that application. For example, Macola® V7.X requires PSQL 2000 license flag present in its license file when it detects that PSQL 2000 is running. If you have not purchased PSQL 2000 from Macola to use with the Macola® V7.X license file, then you should not install PSQL 2000 on the machine uses the Macola® V7.X application.

Copy Registration Files

If you received a registration diskette, please copy the content of your registration diskette to \ELLIOTT7 directory. For example, you can go to DOS prompt and type the following command:

```
copy a:\*.* f:\ELLIOTT7
```

Or you can simply use Windows Explorer to copy the registration file. If you do not have a registration diskette, then your system will function as a demo with identical features as the live version with some limitations.

Converting Your Existing Data for V6.2/6.3 Users

1. After Elliott V7.3 start up and company selection, the application will check your company file to determine the current database version. Elliott V7.3 will prompt you to change your data drive letter if your original drive letter is different from Elliott V7.3. For example, if your original V6.2/6.3 data resides on M:\Macola\data and you copy it to F:\Elliott7\data, then you will need to change your drive letter to F. However, if your drive letters are the same, the application will not prompt you to change the drive letter.

2. The Elliott will begin converting your V6.2/6.3 data files to that of V7.3. The conversion process will also initialize additional Elliott data files.
3. After the conversion, you will need to exit Elliott V7.3, and restart the application. You are now ready to use Elliott V7.3.

Converting Your Existing Data for V6.6x/6.7x Users

1. Upon start up of Elliott V7.3 and choose the company, the system will check your company file to determine the current database version. The system will prompt you to change your data drive letter if your original drive letter is different from Elliott V7.3. For example, if your original V6.6x/6.7x data resides on M:\Macola\data or M:\Elliott\data and you copy it to F:\Elliott7\data, then you will need to change your drive letter to F. However, if your drive letters are the same, the application will not prompt you to change the drive letter.
2. The Elliott will begin initializing additional Elliott data files for V7.3. This may take a few minutes. After the new files are initialized, you can begin using Elliott V7.3.